


RESEARCH

Open Access



# The effect of autistic traits on response to and side-effects of pharmacological ADHD treatment in children with ADHD: results from a prospective clinical cohort

Maria M. Lilja<sup>1,2\*</sup> , Emil Sandblom<sup>1,2</sup>, Paul Lichtenstein<sup>3</sup>, Eva Serlachius<sup>4,5</sup>, Clara Hellner<sup>4,5</sup>, Jyoti Bhagia<sup>6</sup> and Linda Halldner<sup>1,2,3</sup>

## Abstract

**Background:** Attention deficit hyperactivity disorder (ADHD) is a common childhood behavioral condition that globally affects an average of around 5% of children and is associated with several adverse life outcomes. Comorbidity with autism spectrum disorder (ASD) is highly prevalent. Pharmacological treatment for ADHD symptoms has been shown to be effective. However, the prevailing perception is that children with ADHD and concomitant ASD symptoms report poorer efficacy and more side effects. This has been supported by studies on this population, but prospective studies directly comparing children with ADHD and different levels of ASD symptoms are lacking. We aimed to assess if children with ADHD and concomitant ASD symptoms differ regarding effects and side-effects of pharmacological ADHD treatment compared to children with ADHD without ASD traits. This is to our knowledge the second study to directly compare the effect of ADHD medication between ADHD patients with different levels of ASD symptoms.

**Methods:** In a non-randomized, observational, prospective cohort study, 323 patients aged 6 to 17 years who were diagnosed with ADHD and starting pharmacological treatment were divided into two groups: one with high level of ASD symptoms (ASD group,  $N=71$ ) and one with low level of ASD symptoms (non-ASD group,  $N = 252$ ). Treatment outcome was measured as ADHD symptoms, and evaluated using the Swanson, Nolan and Pelham Teacher and Parent ADHD rating scale-version IV (SNAP-IV). Side-effects were evaluated using the Pediatric Side Effects Checklist (P-SEC), at 3 months follow-up.

**Results:** From baseline to 3 months, there was no significant difference in neither treatment effect nor number of clinically significant adverse events experienced between the ASD group and the non-ASD group.

**Conclusions:** Our results did not implicate that ADHD patients with concomitant ASD symptoms have decreased treatment effect of ADHD medication than patients with ADHD without concomitant ASD symptoms. Neither did the results support that ADHD patients with ASD symptoms experienced significantly more side-effects than ADHD patients without ASD symptoms. Although, we did not analyze different medications separately, this is in line with the only previous study directly comparing methylphenidate treatment in children with or without ASD.

**Trial registration:** NCT02136147, May 12, 2014.

\*Correspondence: [maria.lilja@umu.se](mailto:maria.lilja@umu.se)

<sup>2</sup> Child and Adolescent Psychiatric Clinic, Stockholm, Sweden  
Full list of author information is available at the end of the article



**Keywords:** ADHD, ASD, Pharmacological treatment, Effect, Adverse event

## Background

Attention deficit hyperactivity disorder (ADHD) is a common childhood behavioral condition that globally affects an average of around 5% of children [1]. There is a high degree of co-morbidity between ASD and ADHD [2]. Studies show between 5 and 80% of ADHD patients also show features of ASD or have comorbid ASD diagnosis. The reverse relation, ASD with elevated levels of ADHD symptoms or ADHD diagnosis varies between 30 and 75% [2–6]. For ADHD, pharmacological treatment is the primary therapeutic strategy. Stimulants, e.g., methylphenidate (MPH) or dexamphetamine (DEX), usually are the first drugs of choice. The effect of different pharmacological substances in children with ADHD has been widely examined [7–10], which suggests that medication has pronounced effect on typical ADHD manifestations and decreases the risk of detrimental life events [11]. However, a common view in clinical practice that is also supported in earlier studies is that children with co-morbidity between ASD and ADHD often respond poorly to standard ADHD treatment and/or have increased side effects [12–14], which results in higher discontinuation rates [15, 16]. The assumption of decreased treatment effect and increased side-effects of ADHD medication in children with ASD derives from comparisons of results from studies on children with only ADHD, with results from studies on children with ASD and comorbid ADHD [2, 17]. Regarding response rate, a 2005 randomized crossover trial of MPH in pervasive developmental disorders (PDD) with hyperactivity showed a 50% response rate in individuals with ASD and ADHD [15], while in 1999 Jensen et al. presented a 70–80% response rate in individuals with only ADHD [16]. In spite of the lower response rate to MPH in individuals with ASD and ADHD as compared to individuals with ADHD without ASD, MPH is recommended for ADHD symptoms in children with ASD [18]. Further, regarding stimulants, which are the most studied ADHD medications, one meta-analysis from 2010 found MPH to be effective in children with ADHD [19], whereas another meta-analysis from 2013 found MPH to be effective in PDD patients with ADHD [20]. However, in 2016, Accordino et al. presented heterogeneous results of stimulants in an ASD population [12]. Varying effect sizes makes comparison difficult. Regarding non-stimulant ADHD medications, a systematic review showed atomoxetine (ATX) to be effective in ADHD patients [21], even though Newcorn et al. displayed a more subtle effect [22, 23], ATX studies also indicate improvement in ADHD symptoms, at least

hyperactivity, in children with comorbid ASD and ADHD [24–27]. Two RCT studies by Scahill et al. demonstrated guanfacine (GXR) to be effective in children with ADHD and ASD [28, 29].

Reichow et al. performed a systematic review and meta-analysis of 7 double-blind randomized placebo-control trials in which they examined the effect of ADHD medication in children with PDD [20]. The authors concluded common side-effects, such as insomnia and decreased appetite, occurred at similar rates in PDD population, whereas side effects of depression, irritability, and social withdrawal appeared to be more common in children with PDD compared to studies on children with ADHD without PDD. Accordino et al. [12], investigating existing evidence for medications for ADHD-type symptoms in children with ASD, found stimulants to be an option but also potentially problematic given the vulnerability to increased irritability. Accordino et al. refers to the RUPP study (children with PDD and hyperactivity) [15] and Greenhill et al. (children with ADHD without ASD) [30], where side-effects were more common in the RUPP study, with a discontinuation rate of 18%, mostly due to irritability. In children with ADHD without ASD, Jensen et al. reported considerably lower discontinuation rates: 1.4% [16]. On the contrary, a recent study from Ventura et al., did not find a significant difference in discontinuation rates between ADHD patients and ADHD + ASD patients [31]. However, adherence rate was preserved by strictly monitored follow-up. A Cochrane review of the effects of MPH (including 5 crossover studies of children with ADHD and comorbid ASD) concluded that the evidence for adverse events had poor quality, since trials were short and with small sample size [32].

Thus, even though studies examining the pharmacological treatment effect of various ADHD medications in children with ASD exist, there is a shortage of clinical trials conducted on children with or without concomitant ASD symptoms comparing treatment effect and side effects. We have identified only one study directly comparing children with ADHD without ASD diagnosis to children with ADHD and concomitant ASD [33]. Santosh et al. initially performed a retrospective chart review comparing the results of ADHD medication in 113 children with pure ADHD and 61 children with concomitant ASD and ADHD. Finding no significant differences in effect and side-effects, they continued with a prospective observational study design comparing ADHD treatment results from children with ( $n = 27$ ) and without ( $n = 25$ ) concomitant ASD diagnosis. No statistically significant

differences between the groups were found [33]. In the present study, we aimed to study any differences in treatment outcome in a larger clinical prospective study cohort of children with or without high levels of ASD symptoms.

## Methods

### Study design and research participants

Research participants in this study constitute a subsample of those enrolled in the ADHD medication and predictors of treatment outcome (ADAPT) study, a prospective observational cohort study conducted in three Swedish Child and Adolescent Psychiatry units: in Stockholm, Gotland, and Umeå. The ADAPT study has enrolled patients from July 2014 and is still running. By January 2020, 548 patients were included. Patient enrolment in Umeå started in March 2020, and thus for the present all study participants were from the Swedish Child and Adolescent Psychiatry units in Stockholm and Gotland. Inclusion criteria for the ADAPT study were (1) age 6 to 17 years, (2) established clinical ADHD diagnosis, and (3) initiating pharmacological ADHD treatment. Patients who had been on any ADHD medication within the last 3 months prior to study start were not eligible. Participating units were instructed to ask all eligible patients on participation and to report numbers declining and accepting to the study. However, only the numbers of accepting participants were reported. For the present study, participants lacking baseline rating of ASD-symptoms, baseline rating of ADHD-symptoms, or rating of ADHD-symptoms at 3 months were excluded. Forty-three patients did not complete the Autism Spectrum Screening Questionnaire (ASSQ) at baseline, 40 patients did not complete SNAP-IV at baseline, and 208 patients did not complete SNAP-IV at 3 months, leaving the cohort with 323 patients. 295 patients in the cohort had complete information on ADHD medication at 3 months; information was missing for 28 participants. One 5-year old was accepted in the cohort.

Participant flowchart is presented in Fig. 1. See Table 1 for demographic characteristics at baseline and ADHD medication at 3 months.

### Measures

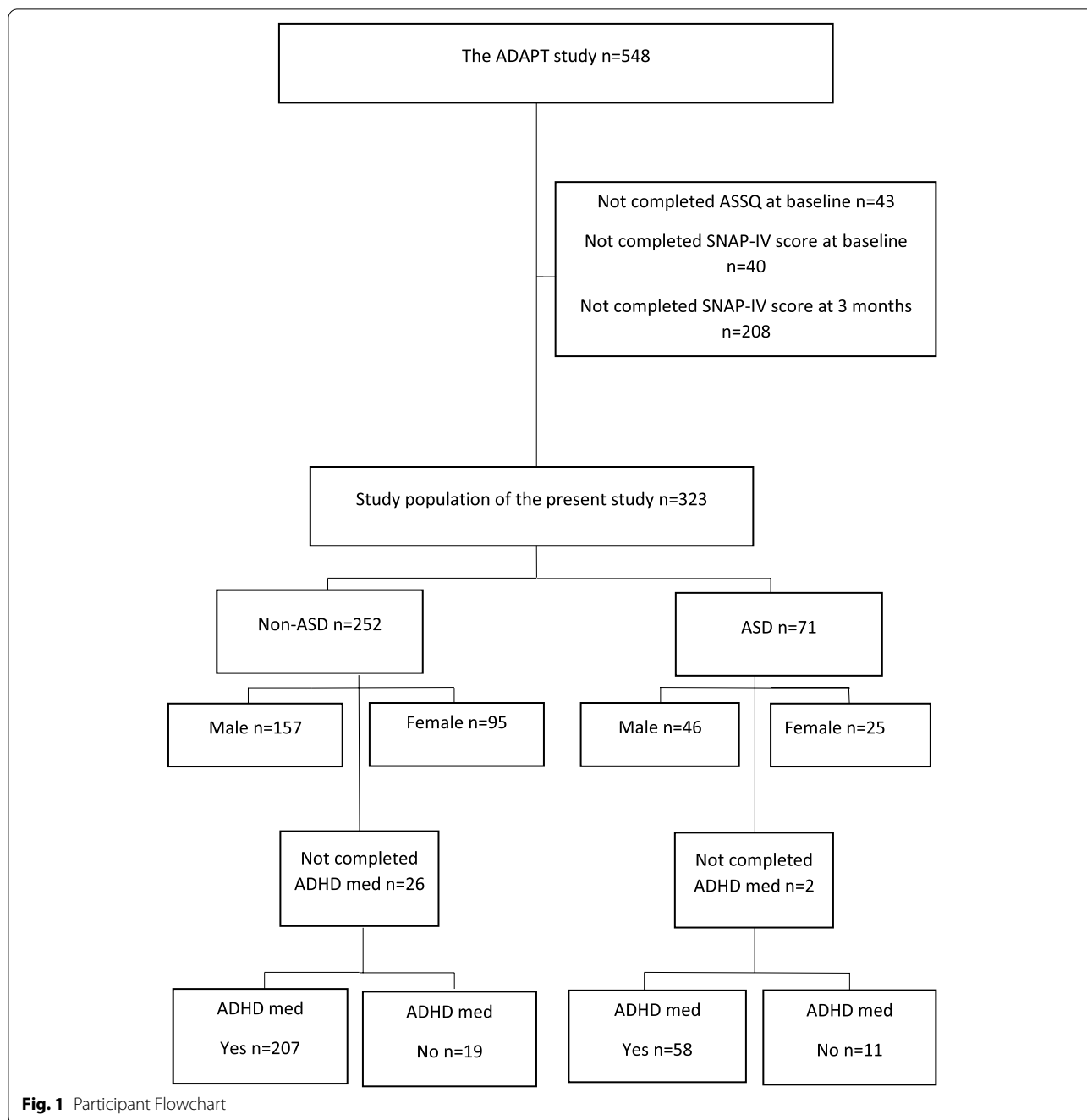
To estimate the effect of medication and assess the ADHD symptoms, we used parent's ratings of the validated Swanson, Nolan and Pelham Teacher and Parent ADHD rating scale-version IV (SNAP-IV) [34, 35] at baseline and at 3 months follow-up. The SNAP-IV consists of a 4-point Likert scale where parents rated their child's various symptoms as: 0 (not at all), 1 (just a little), 2 (quite a bit), or 3 (very much). Thirty items constitute the scale, of which twenty-six can be divided into three

subscales: inattention (items 1–9), hyperactivity/impulsivity (items 11–19), and oppositional defiant disorder (ODD) (items 21–28). The remaining questions are of more summarizing character. The total range of score is 0 to 90.

To answer our main research question, we compared the total SNAP-IV points at baseline and at 3 months follow-up, although we also performed analyses on the subscales. Further, we introduced a prerequisite, a cutoff at 40% reduction in total SNAP-IV score from follow up at 3 months compared to baseline. This resulted in two groups: responders, defined as a SNAP-IV score reduction  $\geq 40\%$ , and non-responders, defined as a SNAP-IV score reduction  $< 40\%$ . According to previous studies, a 40% threshold has shown good coherence with the degree of change in the SNAP-IV rating scale score that predominantly correspond to a substantial clinical effect in regards of ADHD characteristic symptoms [22, 23].

To distinguish children in our cohort with high level of ASD symptoms, we used the validated Autism Spectrum Screening Questionnaire (ASSQ) [36, 37]. The ASSQ comprises twenty-seven items regarding assertions of core ASD symptoms. Parents rate their child on a 3-point Likert scale: 0 (no), 1 (somewhat), or 2 (yes). The range of scores is 0 to 54. Eleven items tap topics regarding social interaction, six cover communication problems, five refer to restricted and repetitive behavior, and five embrace motor clumsiness and tics. ASSQ scores were registered at baseline to identify children with more pronounced ASD symptoms from those with less pronounced symptoms. Cut-off was set to a total of 17 points, where children who scored 17 or above were regarded as the ASD group [38]; consequently, children with scores below 17 were assessed as the non-ASD group. The creators of the questionnaire originally recommended 19 as the cut-off [37] when used in a psychiatric setting, although later studies have shown 17 to be a good tradeoff between sensitivity and specificity [39].

The Pediatric Side Effects Checklist (P-SEC) [40], contains 50 items split into 11 categories reflecting adverse effects of medicine, encompassing the gastrointestinal system, the central nervous system, the endocrine system, mood/behavioral changes, the cardiovascular system, the immune system, the skin, the renal system, sexual concerns/problems, allergic reactions, and other symptoms. The items in the other symptoms category could be further specified in free text. For our analysis, we included only the 49 items with numeric values. For each of the 49 items, the parent rated their child's manifestations on a 4-point scale: 0 (none), 1 (mild/sometimes but tolerable), 2 (moderate/interferes somewhat), or 3 (severe/interferes a lot). The maximum score on the scale is 147. P-SEC was accomplished at baseline and at



3 months follow-up. To assess the number of clinically adverse events present at 3 months after start of pharmacological ADHD treatment, we grouped all 49 items in the P-SEC scale into the 11 subcategories in accordance to affected organ system. Adverse events were noted as a binary categorical variable, present (1 = yes) or absent (0 = no). In order to estimate only clinically significant side-effects, an item was recognized as an adverse event only if the score at follow-up was 2 or more, (the minimum

for not tolerable side-effects and thus probably comparable to earlier studies suggestions on higher level of side-effects leading to treatment discontinuation), provided that the score had increased since baseline registration. A similar rationale to recognize only significant worsening was acknowledged by Simonoff et al. [41], (using a 2 point cut-off deterioration from baseline [42]).

Initiating ADHD medication was an inclusion criterion for enrollment in the study. Consequently, all

**Table 1** Demographic and clinical characteristics of the study participants

Child characteristics Baseline measures	All research participants (N = 323)		Diff. between groups (P value)
	Non- ASD symptoms (n = 252)	ASD symptoms (n = 71)	
Age, year, mean <sup>a</sup>	11.75	10.26	.001
Age range, year <sup>a</sup>	5–17	6–17	
Gender, male, n (%) <sup>a</sup>	157 (62.30)	46 (64.79)	.65
Weight, kg, mean, (95% CI) <sup>a</sup>	48.05 (45.77–50.34)	43.97 (39.59–48.36)	.110
Length, cm, mean, (95% CI) <sup>a</sup>	152.7 (150.55–155.01)	145.10 (141.96–150.03)	.003
SNAP-IV, mean, total score, (n) <sup>b</sup>	43.07	57.06	<.001
ASSQ, mean, total score (n) <sup>b</sup>	7.46	22.71	<.001
ASSQ, median (n) <sup>b</sup>	7	20.62 <sup>f</sup>	
<b>ADHD medication at 3 months (%)<sup>c</sup></b>			
No ADHD medication (n = 30) <sup>c</sup>	8.39 (19)	16.03 (11)	
ADHD medication (n = 265) <sup>c</sup>	91.61 (207.4)	83.97 (57.6)	
Pearson chi-square (P)	.06623		
<b>ADHD medication at 3 months Subdivided in substances<sup>d</sup>(%)</b>			
MPH	74.95 (153.2)	77.39 (43.8)	.68
DEX	0	0	
LDX	15.19 (31.2)	15.55 (8.8)	.84
ATX	9.25 (19)	5.30 (3)	.36
GXR	.49 (1)	3.53 (2)	.05

<sup>a</sup> Unpooled data after ASSQ imputation<sup>b</sup> Pooled data after multiple imputation<sup>c</sup> Pooled data after multiple imputation of ASSQ and SNAP IV scores at baseline and at 3 months. (Non-ASD symptoms N = 226.4 and ASD symptoms N = 68.6)<sup>d</sup> MPH Methylphenidate, DEX Dexamphetamine, LDX Lisdexamphetamine, ATX Atomoxetine, GXR Guanfacine<sup>e</sup> Chi-square test is calculated as a mean of chi-square for original data and imputation 1–5, since it is not possible to get chi-square for pooled values after multiple imputation<sup>f</sup> Mean for original data and 5 imputations

patients were assumed to have started ADHD medication at baseline. At 3 months, data on ADHD medication was obtained and noted as binary yes or no answers. ADHD medication was defined as at least one of either methylphenidate (MPH), dexamphetamine (DEX), lisdexamphetamine (LDX), atomoxetine (ATX), or guanfacine (GXR). In Sweden, MPH is the first drug of choice and accordingly was prescribed to the vast majority of patients. Thus, hereafter when we refer to ADHD medication, it indicates the use of MPH, LDX, ATX, or GXR alone or in combination with others, though the medication used was predominantly MPH. The distribution of ADHD medication (MPH, LDX, ATX, and GXR) is presented in Table 1. None of the patients in our cohort were treated with DEX at 3 months follow-up. Our aim for this study was not to compare the effect of different ADHD medications, and analyses for separate substances were not performed.

### Data analysis

To examine whether patients in the ASD group had inferior treatment effect and augmented adverse effects of ADHD medication compared to patients in the non-ASD group, we analyzed the differences between the ASD group and the non-ASD group concerning total SNAP-IV score reduction from baseline to 3 months as well as a number of side effects for each group.

A multivariable linear regression model was conducted to assess the relationship between the dependent outcome variable, SNAP-IV score at 3 months, and the independent variables (ASD group vs. non-ASD group), adjusting for age, gender, and baseline SNAP-IV score.

In addition, we also performed logistic regressions to assess if the interaction between variables would change if we set the primary outcome to a binary variable, responder or non-responder, using the same independent



variables: ADHD medication, ASD or non-ASD group, age, gender, and SNAP-IV score at baseline.

The sum of the number of adverse events in each of the 11 categories from the P-SEC scale was calculated and compared between the non-ASD group and the ASD group using chi-square tests with continuity correction.

All statistical analyses were conducted using IBS SPSS Statistics software version 26. Comparisons were 2-tailed with statistical significance set at  $P < .05$ .

### Missing data

Multiple imputations (Mis) technique was used to limit the effect of occasional single missing data in ASSQ and SNAP-IV questionnaires [43, 44]. Mis was conducted using IBS SPSS Statistics 26. Mis uses patterns in the available data to make a probability judgement to what the missing value most likely would be and replaces it. Missing values were randomly distributed and did not exceed 5% of the whole data. All SNAP-IV scales, both at baseline and at 3 months, and ASSQ scale variables were included in the Mis model (a total of  $n = 87$  datapoints). The number of random lacking data points were distributed according to SNAP-IV at baseline ( $n = 31$ ), SNAP-IV at 3 months ( $n = 43$ ), and ASSQ at baseline ( $n = 36$ ). Mis generates 5 imputations and therefore a merged pooled result. All analyses were conducted following imputation.

Mis generates a pooled non-integer value, which therefore is not compatible with all analyses in IBS SPSS Statistics software. Since the non-ASD and ASD group were defined by a pooled multiple imputed value of the ASSQ data, the groups were not absolute determined entities. Using pooled data, the non-ASD group was actually  $n = 252.4$  and the ASD group was  $n = 70.6$ . This fact had a negligible effect on our results but did result in somewhat varying composition of the non-ASD and ASD group for dichotomous analyses, precisely examining adverse events, and SNAP-IV responder and non-responder. However, importantly, it did not have any significant impact on our findings.

Concerning the P-SEC scale, random missing data counts were regarded as 0, since we assumed leaving out answering solitary questions about adverse events almost exclusively could be viewed as having “no side-effect,” which equaled a rating of 0. Multiple imputation method used for the SNAP-IV scale and the ASSQ scale was not considered applicable, since the items on the P-SEC scale represent very different themes, and consequently the imputation model would adventure generating adequate answers. There were on average 2.62 (95% CI 1.57–3.68) missing data points per patient in the P-SEC ratings in the Non-ASD group and 2.16 (95% CI 0.69–3.63) per patient in the ASD group. Consequently, the low number

of missing data points on the P-SEC scale did not motivate the risk of bias trying to adjust for missing data.

### Results

Independent  $t$  test established that the non-ASD group scored significantly lower on the SNAP-IV scale than the ASD symptoms group. When comparing total SNAP-IV score, at baseline the mean difference between groups was 13.99 points (CI: 9.39–18.59;  $P < .001$ ), and at 3 months, the mean difference was 8.72 points (CI: 4.32–13.11;  $P < .001$ ). Both groups, as expected, decreased in scores from baseline to 3 months. Accordingly, the same pharmacological treatment effect between the two groups remained when adjusted for higher scores for the ASD symptoms group. When analyzing each SNAP-IV subscales separately—inattention, hyperactivity/impulsivity, and ODD—the same pattern with lower scores for the non-ASD group compared to the ASD group, including both at baseline and at 3 months, as well as the sum of scores overall decreasing from baseline to 3 months for both groups, were exhibited. A slight difference between subscales was observed, where the change in inattention scores (mean difference at baseline 2.38 ( $P = 0.01$ ) and 1.84 ( $P = .015$ ) at 3 months) was less pronounced between the groups than for hyperactivity/impulsivity (mean difference at baseline 5.34 ( $P < .001$ ) and 2.79 ( $P = .001$ ) at 3 months) and ODD (mean difference at baseline 4.31 ( $P < .001$ ) and 2.81 ( $P < .001$ ) at 3 months). The divergence between the non-ASD and the ASD group was significant throughout all subscales except for inattention score at 3 months (Table 2).

At 3 months, 265 patients declared having ADHD medication and 30 patients stated not. In the non-ASD group, 8.39% of participants ( $n = 19$ ) registered as having no ADHD medication and 91.61% ( $n = 207.4$ ) registered as having ADHD medication at 3 months. In the ASD group, 16.03% of participants ( $n = 11$ ) were noted as having no ADHD medication, and 83.97% ( $n = 52$ ) did have ADHD medication at 3 months ( $P = .06623$ ). 74.95% ( $n = 153.2$ ) in the Non-ASD group and 77.39% ( $n = 43.8$ ) in the ASD group stated treatment with MPH ( $P = .68$ ). The second most frequent treatment in both groups was LDX, 15.19% ( $n = 31.2$ ) in the non-ASD group and 15.55% ( $n = 8.8$ ) in the ASD group ( $P = .84$ ) (Table 1).

SNAP-IV at baseline predicted SNAP-IV at 3 months (beta = 0.545, 95% CI: 0.451 to 0.638,  $P < .001$ ). The effect of ADHD medication on SNAP-IV score at 3 months indicated that the medicated group had a lower score, albeit not significant ( $-5.130$ , 95% CI:  $-10.298$  to  $.038$ ,  $P = 0.052$ ), after controlling for age and gender (Table 3). Thus, in our model, there was no significant difference in total SNAP-IV score outcome at 3 months between the ASD group and the non-ASD group.

**Table 2** SNAP-IV scores for each subscale; inattention, hyperactivity/impulsivity, and oppositional defiant Disorder (ODD)

SNAP-IV	Non-ASD symptoms (n = 252)	ASD symptoms (n = 71)	Mean difference (n) 95% Confidence interval	t test significance (p) <sup>1</sup>
Total score, baseline, mean (n)	43.07	57.06	13.99 (CI; 9.39–18.59)	< .001*
Total score, 3 months, mean (n)	31.13	39.85	8.72 (CI; 4.32–13.11)	< .001*
Inattention score, baseline, mean (n)	17.73	20.11	2.38 (CI; 0.97–3.79)	.001*
Inattention score, 3 months, mean (n)	12.57	14.42	1.84 (CI; 0.35–3.34)	.015
Hyperactivity/impulsivity score, Baseline, mean (n)	12.40	17.73	5.34 (CI; 3.33–7.35)	< .001*
Hyperactivity/impulsivity score, 3 months, mean (n)	8.73	11.51	2.79 (CI; 1.07–4.59)	.001*
ODD score, baseline, mean (n)	9.55	13.86	4.31 (CI; 2.61–6.01)	< .001*
ODD score, 3 months, mean (n)	7.35	10.19	2.81 (CI; 1.29–4.39)	< .001*

Table displaying SNAP-IV scores, at baseline and at 3 months respectively, distributed between the non-ASD symptoms group and the ASD symptoms group

<sup>1</sup> Bonferroni correction was applied for the multiple t-tests. Post-hoc Bonferroni correction  $\alpha = .003$ . Thus, adjusted significance level for p-value was < .003

\*Significant p value

**Table 3** Linear regression analysis

Coefficients		Unstandardized coefficients			95% confidence interval for B	
Explanatory variable	Unit of measurement	B	Std. error	Sig.	Lower bound	Upper bound
		Constant	13.565	5.463	.013	2.858
Total SNAP-IV score at baseline	Number	.545	.048	.000*	.451	.638
Non-ASD/ASD	Categorical (1 = non-ASD, 2 = ASD)	.695	1.993	.727	−3.211	4.601
ADHD medication	Categorical (0 = no, 1 = yes)	−5.130	2.637	.052	−10.298	.038
Gender	Categorical (1 = male, 2 = female)	1.638	1.725	0.342	−1.743	5.019
Age (year)	Number	−.386	.271	.154	−.917	.145

Table displaying the relationship between the dependent outcome variable, SNAP IV score at 3 months, and ASD symptoms/Non-ASD symptoms, as independent variable. Adjusting for age, gender, and baseline SNAP-IV score

\*Significant at .01;  $R^2 = .389$

Similarly, there was no compelling evidence indicating discrepancy in efficacy of ADHD medication between the non-ASD and the ASD group when examining the dichotomous variable, responder, and non-responder. In the non-ASD group, 35% ( $N = 88.8$ ) were responders and 65% ( $N = 163.6$ ) were non-responders. In the ASD-group, 30% ( $N = 21$ ) were responders and 70% ( $N = 49.6$ ) were non-responders. Pearson chi-square test (median of original data and 5 imputations) with continuity correction did not reveal a significant difference ( $P = .447$ ). The logistic regression analyses did not show any significant interactions between any of the variables. Chi-square tests with continuity correction, performed to examine the relation between ASD symptoms and adverse events, did not exhibit significant difference of reported adverse events for any of the 11 subcategories between the non-ASD and the ASD group (Table 4).

## Discussion

Our results indicate that there were no differences in pharmacological ADHD treatment effect between patients with ADHD and concomitant high level of ASD symptoms and patients with ADHD and low level of ASD symptoms. In addition, the results from this study indicate that patients with ADHD and high level of ASD symptoms did not experience more adverse events from medication as compared to patients with ADHD and low level of ASD symptoms.

In contrast to our results, previous studies have concluded that children with ASD have less effect of pharmacological treatment of ADHD symptoms and experience more adverse events [15, 20]. These conclusions were, however, drawn comparing results from studies on children with ASD to studies performed on children without ASD, rather than, as is the case for this study, directly comparing the groups themselves. For instance,

**Table 4** Adverse events

Subcategory Organ system <sup>b</sup>	Study Group				Chi-square test with continuity correction (P)
	Non-ASD (N = 257) <sup>a</sup>		ASD (N = 66) <sup>a</sup>		
	No significant symptoms (n)	Significant symptoms (n)	No significant symptoms (n)	Significant symptoms (n)	
Gastrointestinal	138	119	40	26	.385
Central nervous system	130	127	33	33	1.0
Endocrine	196	61	48	18	.663
Mood/behavior changes	225	32	52	14	.105
Cardiovascular	247	10	61	5	.347*
Immune system	253	4	65	1	1.0*
Skin	243	14	63	3	1.0*
Renal	250	7	64	2	1.0*
Sexual	256	1	66	0	1.0*
Other	252	5	64	2	.947*
Allergic	219	38	55	11	.851

Table displaying number of reported significant symptoms and No significant symptoms, for the Non-ASD symptoms group and the ASD symptoms group, subdivided in 11 organ systems

\*The chi-squared approximation may be incorrect due to insufficient number

<sup>a</sup> The different number of individuals in the groups are due to multiple imputation. Using pooled values defining the groups, results in non-integer numbers. The chi-square tests are analyzed from pooled values

<sup>b</sup> The total range of score on the P-SEC scale is 0 to 196. However, in our analyses, the range was 0–49, after changing the items into dichotomous variables

increased side-effects were not reported or not significantly increased in studies with uncomplicated ADHD. Indeed, overall, it was difficult to compare studies due to the use of disparate rating-scales and outcome measures. For example, the response rate in the present study was generally low, which may be due to that the definition for response was set fairly high. Previous studies that have used this definition of treatment response [22, 23], also reported lower response rates than often reported from RCTs [10]. Also, this clinical observational study had few exclusion criteria and thus may represent a more heterogeneous cohort than in most RCTs. This may also affect the observed response rate. An international consensus concerning standardized outcome scales or measures would facilitate comparisons in future studies.

It is also possible that the low response rates observed in the present study are due to non-optimal pharmacological treatment as the observational study protocol does not decree specific medication or medication doses. However, this should be similar for both groups studied. In fact, the response rates in the two groups are similar, and the group differences in SNAP-IV scores seem smaller at 3 months follow-up despite higher SNAP-IV scores at baseline in the ASD group. This would mean that if anything we are underestimating the symptom reduction in the ASD group rather than the opposite.

The finding that the ASD group had higher levels of ADHD symptoms was not expected [33, 45], but may

partly be explained by the group age difference, as well as the ASD group representing children with more severe functional deficits. However, adjusting for age did not change the main results for this study.

The results from the present study are in line with the results from the only previous study directly comparing ADHD medication effects in children with and without concomitant ASD [33]. Neither in a retrospective chart review, nor in a prospective observational design did they find any statistically significant differences in treatment effect (as measured by the Clinical Global Impression-Improvement scale, CGI-I) or in side-effects.

The present study was designed to evaluate both effectiveness of pharmacological treatment for ADHD as well as analysis of adverse events arising from medication. The baseline measures for adverse events enabled us to adjust for symptoms already prevailing at treatment start, causing more robust results.

Further, we examined both the absolute reduction in ADHD symptoms from baseline to 3 months follow-up and response rate (defined as 40% reduction from baseline to 3 months) to investigate if the lack of difference between the groups remained introducing a clear cutoff. We also analyzed the SNAP-IV score subdivided in the three subscales: inattention, hyperactivity/impulsivity, and ODD. The results, for both additional examinations, was consistent, with SNAP-IV at baseline being the only significant predictor of SNAP-IV at 3 months, except



for when performing linear regression for the subscale inattention, where also ADHD medication significantly improved ADHD symptoms ( $R^2$  0.24, beta  $-2.44$  (CI:  $-4.33$  to  $-0.55$ ;  $P = .0011$ )). We hypothesize ADHD medication would also significantly have affected our original model if the number of study objects had been larger and the rate of missing information on ADHD medication had been smaller.

Importantly, we did not find any significant difference in the gender ratio between the non-ASD and the ASD group or concerning pharmacological treatment at 3 months, which is positive since it has been indicated in previous studies that females with ADHD may be more easily missed in the diagnostic process and less likely to be prescribed medication [46].

The study is subject to several limitations. First, there is no control group and, consequently, this study did not randomize patients to treatment or no treatment, thus introducing a selection bias. As always in observational studies, residual confounding may influence the results.

Second, we did not have documentation as to whether or not the child had a clinical diagnosis of ASD according to the DSM-5; rather, we only noted the presence of ASD symptoms in accordance with a parent-reported symptom-assessment with ASSQ. As such, using the ASSQ scale for distinction of the ASD and the non-ASD group as well as for determining the cut-off value could be questioned [37, 39]. There is a risk of misclassification of patients, including patients without an ASD diagnosis in the ASD group and vice versa, which could result in over- or underestimation of pharmacological treatment effect and adverse events for each group. However, the importance of the study remains, since the ASSQ was not meant to be used diagnostically, but as a screening tool to evaluate the presence of core ASD symptoms. In fact, we suggest it was also a study strength that ASD diagnosis was not necessary for inclusion, as it led to a higher number of patients suffering from ASD symptoms earlier being identified, possibly prohibiting the risk of so-called 'doctor's delay' [47, 48]. Nonetheless, since previous studies often defined ASD differently, definite comparative conclusions should be made with caution.

Third, our cohort was constituted of a limited number of patients and a heterogeneous group, which may affect the possibility to detect any less pronounced differences between the groups. On the other hand, our study, with relatively few exclusion criteria, represents the clinical setting and resembles so-called real-world evidence. Thus, the study is expected to have proper face-validity.

Fourth, like many clinical trials, our study suffered from losses to follow up, especially concerning completion of the ADHD medication form. However, there were no significant difference in the rate of continued

pharmacological treatment at 3 months between the ASD group and the non-ASD group. Neither was there a significant difference in the number of patients defined as having ASD symptoms (ASSQ points  $\geq 17$ ) between patients lost to follow up (27%) and included patients (21%) ( $P = .11$ ), thereby diminishing the risk of selection bias in data. Occasional missing data points in the P-SEC scale were regarded as zero, which might have underestimated the number of adverse events. However, missing data points in that dataset were low, which implies that the risk of undervaluing the number of adverse events was small.

Fifth, we did not have any information about how many of the patients who were offered to participate in the study consented and how many declined.

Sixth, the study lacks information on pharmacological dosage, which could potentially mask a significant difference between the ASD and the non-ASD group. Hypothetically, the two groups could have been treated with different dosages. However, since pharmacological treatment is subject to clinical guidelines, it is not likely that a substantial amount of patients would have been on noticeable deviant dosages. Though, it is possible that occasional patients were treated with more than one substance. We did not aim to answer the question whether there was a difference in efficacy amidst different substances between the groups, which is indicated in other studies [15, 20, 24, 28, 49]. However, as shown in Table 1, the majority of patients, both in the Non-ASD and the ASD group, used MPH as pharmacological treatment, and no significant differences in the distribution of different substances were observed between the groups.

Seventh, when we compared the ASD and non-ASD group in experiences of adverse events, we chose to examine side-effects divided in subcategories. Adverse events per individual were not analyzed. Therefore, it is possible that one particular individual represents many adverse events. Also, the variable adverse events provided information about if clinically significant adverse events prevailed but not about the exact quantity or grading of the side-effects.

Eighth, we also have no information regarding additional treatment interventions that could interact with the results.

Ninth, mean age at inclusion was significantly 1.49 years younger in patients in the ASD group (10.26 years (CI: 9.51 to 11.04,  $P = .001$ )) compared to the non-ASD group (11.75 years (CI: 11.34–12.15,  $P = .001$ , Table 1)). We interpret this finding as logical and reasonable considering that children with more symptoms tend to be noticed earlier. Nonetheless, age did not significantly affect outcome in any of our models.

Tenth, in our study, we were limited to use only SNAP-IV Parent rating scale as a proxy for ADHD symptoms. Since children may behave different at home compared to in a school environment, having access to the SNAP-IV Teacher rating scale, could have given a more complete picture. However, additional informants also mean greater challenges to carry through data collection with the risk of less participation rate. Including teachers' ratings in future data collections will be an asset to study any differences between the groups in the school setting.

Despite limitations, we believe that our results are an important contribution to research aimed at examining the effect of pharmacological ADHD treatment in children with comorbid ASD or ASD symptoms. For clinicians as well as for experts stipulating medical guidelines, it is crucial that decisions are based on best available evidence, increasing the probability of patients receiving the appropriate treatment. ADHD is associated with lower quality of life [50]. Comorbidity with ASD or high level of ASD symptoms does not ease this burden [51, 52]. If a misconception exists that patients with pronounced symptoms of ASD might not benefit from pharmacological ADHD treatment, they are at risk of not obtaining an efficient regimen. A previous epidemiological study found differences in prescription patterns between individuals with ADHD and individuals with ADHD and comorbid ASD [49], although what underlies these differences is not known.

Our results indicate the need to reconsider that ASD patients experience more adverse events, which could precipitate preterm pharmacological treatment, for symptoms that are not related to medication but to the characteristics of the diagnosis itself. The need of equal and correct treatment for children suffering from comorbid disorders is essential, and the possibility of customized treatment must be further elucidated. Since our study is the second to directly compare the pharmacological effect of ADHD medication between ADHD patients with different levels of ASD symptoms, more research is needed to shed light on the discrepancy of our results and previous perceptions.

## Conclusions

In summary, our results indicate that there were no significant differences in pharmacological treatment effect between patients with ADHD and concomitant pronounced ASD symptoms and patients with ADHD without high level of ASD symptoms. There was also no significant difference in the number of reported clinically significant adverse events between the groups. Studies directly comparing the effects of ADHD medication in children with only ADHD and children with

comorbid ASD are important to diminish the risk that decisions about medication rely on unconfirmed assumptions. The present results are in line with the results from the only previous prospective study comparing these patient groups.

## Abbreviations

ADHD: Attention-deficit/hyperactivity disorder; ASD: Autism spectrum disorder; SNAP-IV: Swanson; PDD: Pervasive Developmental Disorders; Nolan and Pelham Teacher and Parent ADHD rating scale-version IV; ASSQ: Autism Spectrum Screening Questionnaire; P-SEC: Pediatric Side Effects Checklist; ODD: Oppositional defiant disorder; DSM-V: Diagnostic and Statistical Manual of Mental Disorders; Mis: Multiple imputations; MCMC: Markov Chain Monte Carlo method; OCD: Obsessive compulsive disorder; MPH: Methylphenidate; EDX: Dexamphetamine; LDX: Lisdexamphetamine; ATX: Atomoxetine; GXR: Guanfacine; ID: Intellectual disability.

## Acknowledgements

Beside all study participants and their guardians, the authors also want to thank all clinicians (the nurses in particular) and directors at the participating units, making the collection of data for this study possible.

## Authors' contributions

M.L. performed the original draft, editing, and formal analysis, with professional statistical guidance. E. Sandblom performed a master's thesis which was the origin of this work and has contributed to visualization of original draft. M.L. and L.H. took part in data processing and methodology. P.L. contributed to conceptualization, reviewing, and editing. E. Serlachius contributed to initial funding acquisition, validation, and reviewing. C.H. contributed to initial funding acquisition, validation, and reviewing. J.B. contributed to the evaluation of pilot study and reviewing. L.H. contributed to the conception and design of the study, data curation, funding acquisition, editing and reviewing, and led the study implementation. All authors reviewed the whole draft and approved the final manuscript.

## Funding

Open access funding provided by Umea University. The study is part of the ADAPT study, which was supported by Region Stockholm (Hälsa- och sjukvårdsförvaltningen, and the division of Child and Adolescent Psychiatry), Region Vasterbotten (centrala ALF and BAS-ALF), ALF-PPG Stockholm, the Medical faculty at Umea University (FS 2.1.6-2408-18), Oskarfonnden, The Mayo Clinic-Karolinska Institutet Collaborative Travel Award. Maria M Lilja had financial support from the Child and Adolescent Psychiatry in Västerbotten, as part of the position. Emil Sandblom was funded by Umeå University as part of a master's thesis for the medical school.

## Availability of data and materials

Due to legal reasons and the ethical permit for the study, the data that support the findings of this study are not publicly available. According to Swedish regulations, the data are classified as sensitive personal data. The data are accessible on reasonable request from the corresponding authors. Raw data are generated at Karolinska Institutet.

## Declarations

### Ethics approval and consent to participate

All aspects of the study were performed in accordance with the Declaration of Helsinki. The legal guardians of all participating children (all under the age of 18 years at inclusion), provided written informed consent to participate in this study. In addition, written informed consent was also provided by participants 15 years or older. Participation was voluntary and participants could at any time cancel further participation without consequences for continued treatment. The study was ethically approved for human work by the regional Ethics Board in Stockholm, diary number: 2013/1007-31, 2016/1350-32, 2018/2024.

### Consent for publication

Not applicable.

**Competing interests**

The authors declare that they have no competing interests.

**Author details**

<sup>1</sup>Department of Clinical Sciences, Child and Adolescent Psychiatry, Umea University, Universitetstorget 4, SE907 36 Umea, Sweden. <sup>2</sup>Child and Adolescent Psychiatric Clinic, Stockholm, Sweden. <sup>3</sup>Department of Medical Epidemiology and Biostatistics, Karolinska Institutet, PO Box 281, SE-171 77 Stockholm, Sweden. <sup>4</sup>Department of Clinical Neuroscience, Center for Psychiatry Research, Karolinska Institutet, PO Box 281, SE171 77 Stockholm, Sweden. <sup>5</sup>Stockholm Health Care Services, Region Stockholm, Sweden. <sup>6</sup>Department of Psychiatry and Psychology, Mayo Clinic, 200 First Street SW, Rochester, MN 55905, USA.

Received: 24 November 2021 Accepted: 14 February 2022

Published online: 06 March 2022

**References**

- Erskine HE, Baxter AJ, Patton G, Moffitt TE, Patel V, Whiteford HA, et al. The global coverage of prevalence data for mental disorders in children and adolescents. *Epidemiol Psychiatr Sci*. 2017;26(4):395–402.
- Davis NO, Kollins SH. Treatment for co-occurring attention deficit/hyperactivity disorder and autism spectrum disorder. *Neurotherapeutics*. 2012;9(3):518–30.
- Leitner Y. The co-occurrence of autism and attention deficit hyperactivity disorder in children - what do we know? *Front Hum Neurosci*. 2014;8:268.
- Jensen CM, Steinhausen HC. Comorbid mental disorders in children and adolescents with attention-deficit/hyperactivity disorder in a large nationwide study. *Atten Defic Hyperact Disord*. 2015;7(1):27–38.
- Reale L, Bartoli B, Cartabia M, Zanetti M, Costantino MA, Canevini MP, et al. Comorbidity prevalence and treatment outcome in children and adolescents with ADHD. *Eur Child Adolesc Psychiatry*. 2017;26(12):1443–57.
- Hollingdale J, Woodhouse E, Young S, Fridman A, Mandy W. Autistic spectrum disorder symptoms in children and adolescents with attention-deficit/hyperactivity disorder: a meta-analytical review. *Psychol Med*. 2020;50(13):2240–53.
- Ruiz-Goikoetxea M, Cortese S, Aznarez-Sanado M, Magallon S, Alvarez Zallo N, Luis EO, et al. Risk of unintentional injuries in children and adolescents with ADHD and the impact of ADHD medications: a systematic review and meta-analysis. *Neurosci Biobehav Rev*. 2018;84:63–71.
- Chan E, Fogler JM, Hammerness PG. Treatment of attention-deficit/hyperactivity disorder in adolescents: a systematic review. *JAMA*. 2016;315(18):1997–2008.
- Osland ST, Steeves TD, Pringsheim T. Pharmacological treatment for attention deficit hyperactivity disorder (ADHD) in children with comorbid tic disorders. *Cochrane Database Syst Rev*. 2018;6:CD007990.
- Cortese S, Adamo N, Del Giovane C, Mohr-Jensen C, Hayes AJ, Carucci S, et al. Comparative efficacy and tolerability of medications for attention-deficit hyperactivity disorder in children, adolescents, and adults: a systematic review and network meta-analysis. *Lancet Psychiatry*. 2018;5(9):727–38.
- Dalsgaard S, Leckman JF, Mortensen PB, Nielsen HS, Simonsen M. Effect of drugs on the risk of injuries in children with attention deficit hyperactivity disorder: a prospective cohort study. *Lancet Psychiatry*. 2015;2(8):702–9.
- Accordino RE, Kidd C, Politte LC, Henry CA, McDougle CJ. Psychopharmacological interventions in autism spectrum disorder. *Expert Opin Pharmacother*. 2016;17(7):937–52.
- Peacock G, Amendah D, Ouyang L, Grosse SD. Autism spectrum disorders and health care expenditures: the effects of co-occurring conditions. *J Dev Behav Pediatr*. 2012;33(1):2–8.
- Handen BL, Johnson CR, Lubetsky M. Efficacy of methylphenidate among children with autism and symptoms of attention-deficit hyperactivity disorder. *J Autism Dev Disord*. 2000;30(3):245–55.
- Research Units on Pediatric Psychopharmacology Autism N. Randomized, controlled, crossover trial of methylphenidate in pervasive developmental disorders with hyperactivity. *Arch Gen Psychiatry*. 2005;62(11):1266–74.
- Jensen et al. A 14-month randomized clinical trial of treatment strategies for attention-deficit/hyperactivity disorder. The MTA Cooperative Group. Multimodal Treatment Study of Children with ADHD. *Arch Gen Psychiatry*. 1999;56(12):1073–86.
- Gargaro BA, Rinehart NJ, Bradshaw JL, Tonge BJ, Sheppard DM. Autism and ADHD: how far have we come in the comorbidity debate? *Neurosci Biobehav Rev*. 2011;35(5):1081–8.
- Howes OD, Rogdaki M, Findon JL, Wichers RH, Charman T, King BH, et al. Autism spectrum disorder: consensus guidelines on assessment, treatment and research from the British Association for Psychopharmacology. *J Psychopharmacol*. 2018;32(1):3–29.
- Faraone SV, Buitelaar J. Comparing the efficacy of stimulants for ADHD in children and adolescents using meta-analysis. *Eur Child Adolesc Psychiatry*. 2010;19(4):353–64.
- Reichow B, Volkmar FR, Bloch MH. Systematic review and meta-analysis of pharmacological treatment of the symptoms of attention-deficit/hyperactivity disorder in children with pervasive developmental disorders. *J Autism Dev Disord*. 2013;43(10):2435–41.
- Bushe CJ, Savill NC. Systematic review of atomoxetine data in childhood and adolescent attention-deficit hyperactivity disorder 2009–2011: focus on clinical efficacy and safety. *J Psychopharmacol*. 2014;28(3):204–11.
- Newcorn JH, Kratochvil CJ, Allen AJ, Casat CD, Ruff DD, Moore RJ, et al. Atomoxetine and osmotically released methylphenidate for the treatment of attention deficit hyperactivity disorder: acute comparison and differential response. *Am J Psychiatry*. 2008;165(6):721–30.
- Newcorn JH, Sutton VK, Weiss MD, Sumner CR. Clinical responses to atomoxetine in attention-deficit/hyperactivity disorder: the Integrated Data Exploratory Analysis (IDEA) study. *J Am Acad Child Adolesc Psychiatry*. 2009;48(5):511–8.
- Patra S, Nebhinani N, Viswanathan A, Kirubakaran R. Atomoxetine for attention deficit hyperactivity disorder in children and adolescents with autism: a systematic review and meta-analysis. *Autism Res*. 2019;12(4):542–52.
- Harfterkamp M, van de Loo-Neus G, Minderaa RB, van der Gaag RJ, Escobar R, Schacht A, et al. A randomized double-blind study of atomoxetine versus placebo for attention-deficit/hyperactivity disorder symptoms in children with autism spectrum disorder. *J Am Acad Child Adolesc Psychiatry*. 2012;51(7):733–41.
- Arnold LE, Aman MG, Cook AM, Witwer AN, Hall KL, Thompson S, et al. Atomoxetine for hyperactivity in autism spectrum disorders: placebo-controlled crossover pilot trial. *J Am Acad Child Adolesc Psychiatry*. 2006;45(10):1196–205.
- Handen BL, Aman MG, Arnold LE, Hyman SL, Tumularu RV, Lecavalier L, et al. Atomoxetine, parent training, and their combination in children with autism spectrum disorder and attention-deficit/hyperactivity disorder. *J Am Acad Child Adolesc Psychiatry*. 2015;54(11):905–15.
- Scahill L, McCracken JT, King BH, Rockhill C, Shah B, Politte L, et al. Extended-release guanfacine for hyperactivity in children with autism spectrum disorder. *Am J Psychiatry*. 2015;172(12):1197–206.
- Scahill L, Aman MG, McDougle CJ, McCracken JT, Tierney E, Dziura J, et al. A prospective open trial of guanfacine in children with pervasive developmental disorders. *J Child Adolesc Psychopharmacol*. 2006;16(5):589–98.
- Greenhill LL, Swanson JM, Vitiello B, Davies M, Clevenger W, Wu M, et al. Impairment and deportment responses to different methylphenidate doses in children with ADHD: the MTA titration trial. *J Am Acad Child Adolesc Psychiatry*. 2001;40(2):180–7.
- Ventura P, de Giambattista C, Spagnoletta L, Trerotoli P, Cavone M, Di Gioia A, et al. Methylphenidate in autism spectrum disorder: a long-term follow up naturalistic study. *J Clin Med*. 2020;9(8):2566.
- Sturman N, Deckx L, van Driel ML. Methylphenidate for children and adolescents with autism spectrum disorder. *Cochrane Database Syst Rev*. 2017;11:CD011144.
- Santosh PJ, Baird G, Pityaratstian N, Tavare E, Gringras P. Impact of comorbid autism spectrum disorders on stimulant response in children with attention deficit hyperactivity disorder: a retrospective and prospective effectiveness study. *Child Care Health Dev*. 2006;32(5):575–83.
- Hall CL, Guo B, Valentine AZ, Groom MJ, Daley D, Sayal K, et al. The validity of the SNAP-IV in children displaying ADHD symptoms. *Assessment*. 2020;27(6):1258–71.
- Bussing R, Fernandez M, Harwood M, Wei H, Garvan CW, Eyberg SM, et al. Parent and teacher SNAP-IV ratings of attention deficit hyperactivity

- disorder symptoms: psychometric properties and normative ratings from a school district sample. *Assessment*. 2008;15(3):317–28.
36. Mattila ML, Jussila K, Linna SL, Kielinen M, Bloigu R, Kuusikko-Gauffin S, et al. Validation of the Finnish Autism Spectrum Screening Questionnaire (ASSQ) for clinical settings and total population screening. *J Autism Dev Disord*. 2012;42(10):2162–80.
  37. Ehlers S, Gillberg C, Wing L. A screening questionnaire for Asperger syndrome and other high-functioning autism spectrum disorders in school age children. *J Autism Dev Disord*. 1999;29(2):129–41.
  38. Posserud MB, Lundervold AJ, Gillberg C. Validation of the autism spectrum screening questionnaire in a total population sample. *J Autism Dev Disord*. 2009;39(1):126–34.
  39. Mattila ML, Jussila K, Kuusikko S, Kielinen M, Linna SL, Ebeling H, et al. When does the Autism Spectrum Screening Questionnaire (ASSQ) predict autism spectrum disorders in primary school-aged children? *Eur Child Adolesc Psychiatry*. 2009;18(8):499–509.
  40. Pavuluri MN, Henry DB, Carbray JA, Sampson G, Naylor MW, Janicak PG. Open-label prospective trial of risperidone in combination with lithium or divalproex sodium in pediatric mania. *J Affect Disord*. 2004;82(Suppl 1):S103–11.
  41. Simonoff E, Taylor E, Baird G, Bernard S, Chadwick O, Liang H, et al. Randomized controlled double-blind trial of optimal dose methylphenidate in children and adolescents with severe attention deficit hyperactivity disorder and intellectual disability. *J Child Psychol Psychiatry*. 2013;54(5):527–35.
  42. Hill P, Taylor E. An auditable protocol for treating attention deficit/hyperactivity disorder. *Arch Dis Child*. 2001;84(5):404–9.
  43. Schafer JL, Graham JW. Missing data: our view of the state of the art. *Psychol Methods*. 2002;7(2):147–77.
  44. Dziura JD, Post LA, Zhao Q, Fu Z, Peduzzi P. Strategies for dealing with missing data in clinical trials: from design to analysis. *Yale J Biol Med*. 2013;86(3):343–58.
  45. Joshi G, Faraone SV, Wozniak J, Tarko L, Fried R, Galdo M, et al. Symptom profile of ADHD in youth with high-functioning autism spectrum disorder: a comparative study in psychiatrically referred populations. *J Atten Disord*. 2017;21(10):846–55.
  46. Mowlem FD, Rosenqvist MA, Martin J, Lichtenstein P, Asherson P, Larsson H. Sex differences in predicting ADHD clinical diagnosis and pharmacological treatment. *Eur Child Adolesc Psychiatry*. 2019;28(4):481–9.
  47. Shattuck PT, Durkin M, Maenner M, Newschaffer C, Mandell DS, Wiggins L, et al. Timing of identification among children with an autism spectrum disorder: findings from a population-based surveillance study. *J Am Acad Child Adolesc Psychiatry*. 2009;48(5):474–83.
  48. Fountain C, King MD, Bearman PS. Age of diagnosis for autism: individual and community factors across 10 birth cohorts. *J Epidemiol Community Health*. 2011;65(6):503–10.
  49. Johansson V, Sandin S, Chang Z, Taylor MJ, Lichtenstein P, D'Onofrio BM, et al. Medications for attention-deficit/hyperactivity disorder in individuals with or without coexisting autism spectrum disorder: analysis of data from the Swedish prescribed drug register. *J Neurodev Disord*. 2020;12(1):44.
  50. Faraone SV, Banaschewski T, Coghill D, Zheng Y, Biederman J, Bellgrove MA, et al. The World Federation of ADHD International Consensus Statement: 208 evidence-based conclusions about the disorder. *Neurosci Biobehav Rev*. 2021;128:789–818.
  51. Thomas S, Sciberras E, Lycett K, Papadopoulos N, Rinehart N. Physical functioning, emotional, and behavioral problems in children with ADHD and comorbid ASD: a cross-sectional study. *J Atten Disord*. 2018;22(10):1002–7.
  52. Mikami AY, Miller M, Lerner MD. Social functioning in youth with attention-deficit/hyperactivity disorder and autism spectrum disorder: transdiagnostic commonalities and differences. *Clin Psychol Rev*. 2019;68:54–70.

## Publisher's Note

Springer Nature remains neutral with regard to jurisdictional claims in published maps and institutional affiliations.

Ready to submit your research? Choose BMC and benefit from:

- fast, convenient online submission
- thorough peer review by experienced researchers in your field
- rapid publication on acceptance
- support for research data, including large and complex data types
- gold Open Access which fosters wider collaboration and increased citations
- maximum visibility for your research: over 100M website views per year

At BMC, research is always in progress.

Learn more [biomedcentral.com/submissions](https://biomedcentral.com/submissions)

